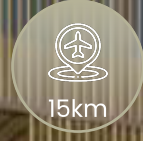
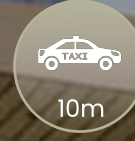
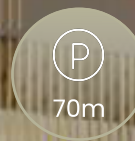
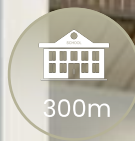


THESSALONIKI 21

# APARTMENTS IN THESSALONIKI CITY CENTER

[WWW.THESSALONIKI21.COM](http://WWW.THESSALONIKI21.COM)

[INFO@21THESSALONIKI.COM](mailto:INFO@21THESSALONIKI.COM)





ERMU 7, THESSALONIKI 546 25, GREECE  
CLICK FOR LOCATION

# THESSALONIKI 21

"THESSALONIKI 21" - STARTED WITH RECONSTRUCTION FROM THE GROUND UP OF A RESIDENTIAL AND COMMERCIAL BUILDING IN THE CITY CENTER OF THESSALONIKI.

**SALE OF 10 LUXURIOUS APARTMENTS.**

MAKE A SMART CHOICE, BY BUYING AN APARTMENT IN THE BUILDING "THESSALONIKI 21" AND BECOME PART OF THE MOST ATTRACTIVE LOCATION TO LIVE AND WORK IN THESSALONIKI.

APARTMENTS FROM **30 M2 TO 130 M2**, LOCATED ON "ERMOU" STREET NO. 7 RIGHT NEXT TO THE MARKET, AND JUST ABOVE "TSIMISKI" STREET.

**LADADIKA** - GATEWAY TO ALL BUSINESS, FASHION, ENTERTAINMENT, CULTURAL, EVENTS, SHOPPING, ENTERTAINMENT, RESTAURANTS, AND CAFES.

# EXCELLENT LOCATION

IN JUST A FEW MINUTES TO THE ESSENTIAL AND DESIRED  
LOCATIONS IN THE CITY



Sea 350m



Parking 70m (1min.)



Aristotelous Square 600m (5min.)



Bus Station 10m



Train Station 1,2km



Taxi Station 10m



Airport 15km



Elementary School 300m



University Of Sheffield 250m



Kindergarten 200m



Hospital 2,1km

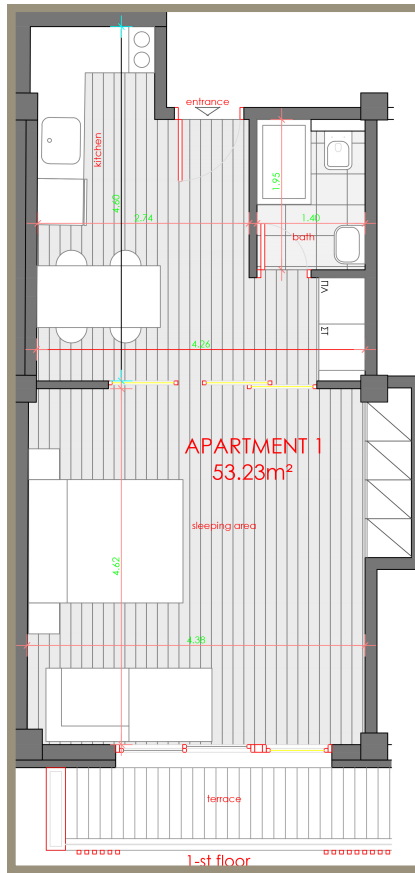


Market 10m



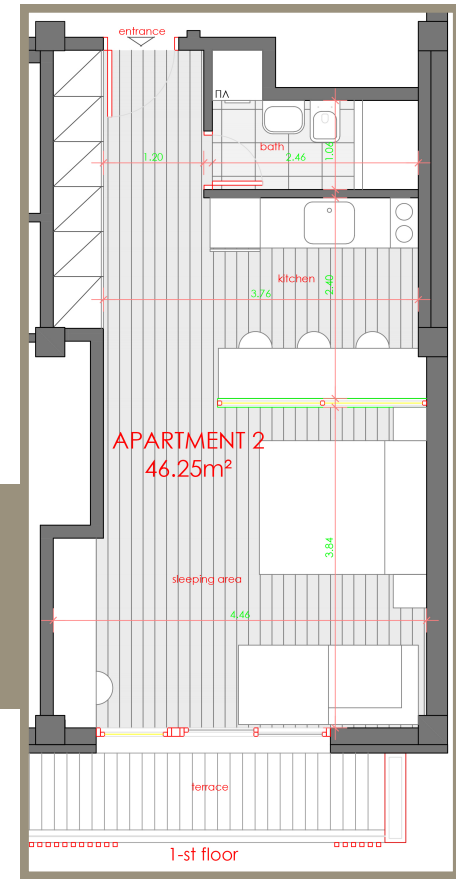
Restaurant 50m

# FLOOR NO. 1



APARTMENT TYPE 1

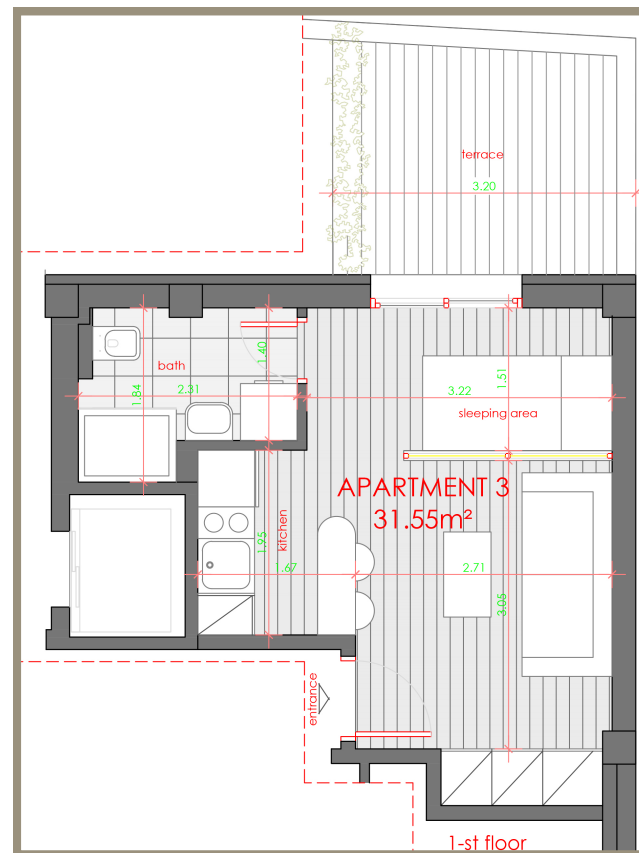
53.23 M2



APARTMENT TYPE 2

APARTMENT TYPE 2

46.25 M2

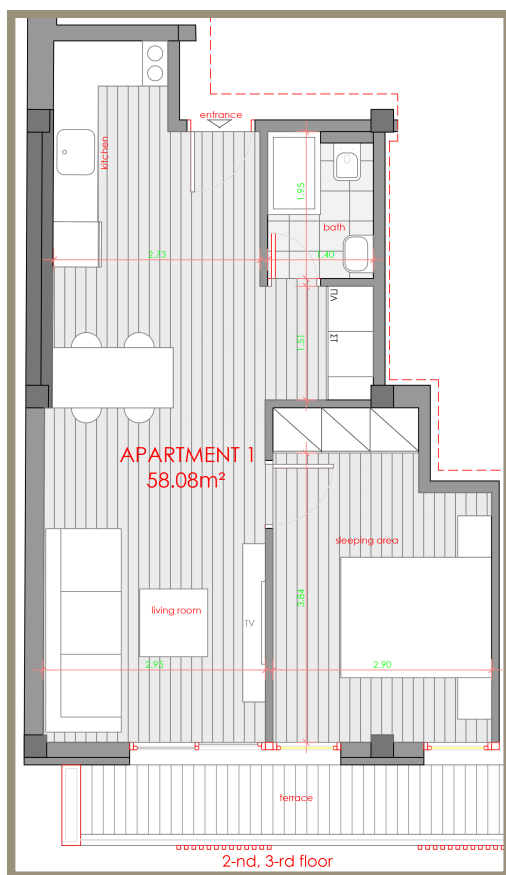


APARTMENT TYPE 3

APARTMENT TYPE 3

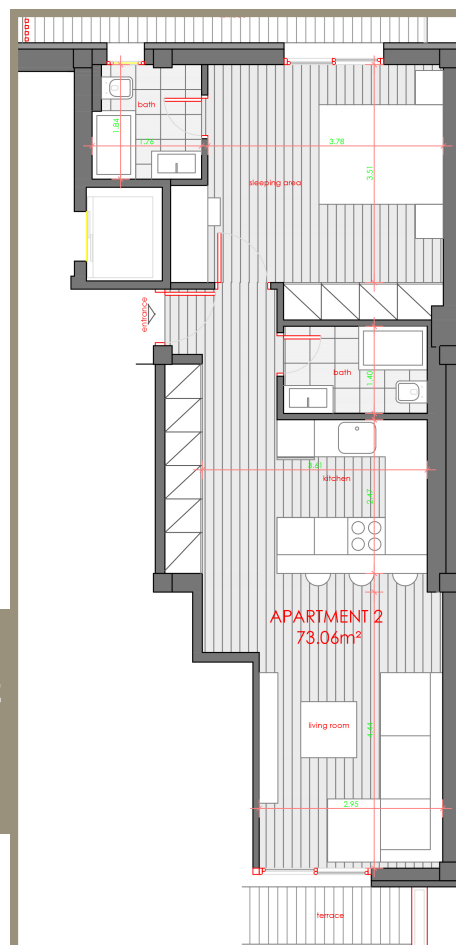
31.55 M2

# FLOOR NO. 2 AND 3



APARTMENT TYPE 1

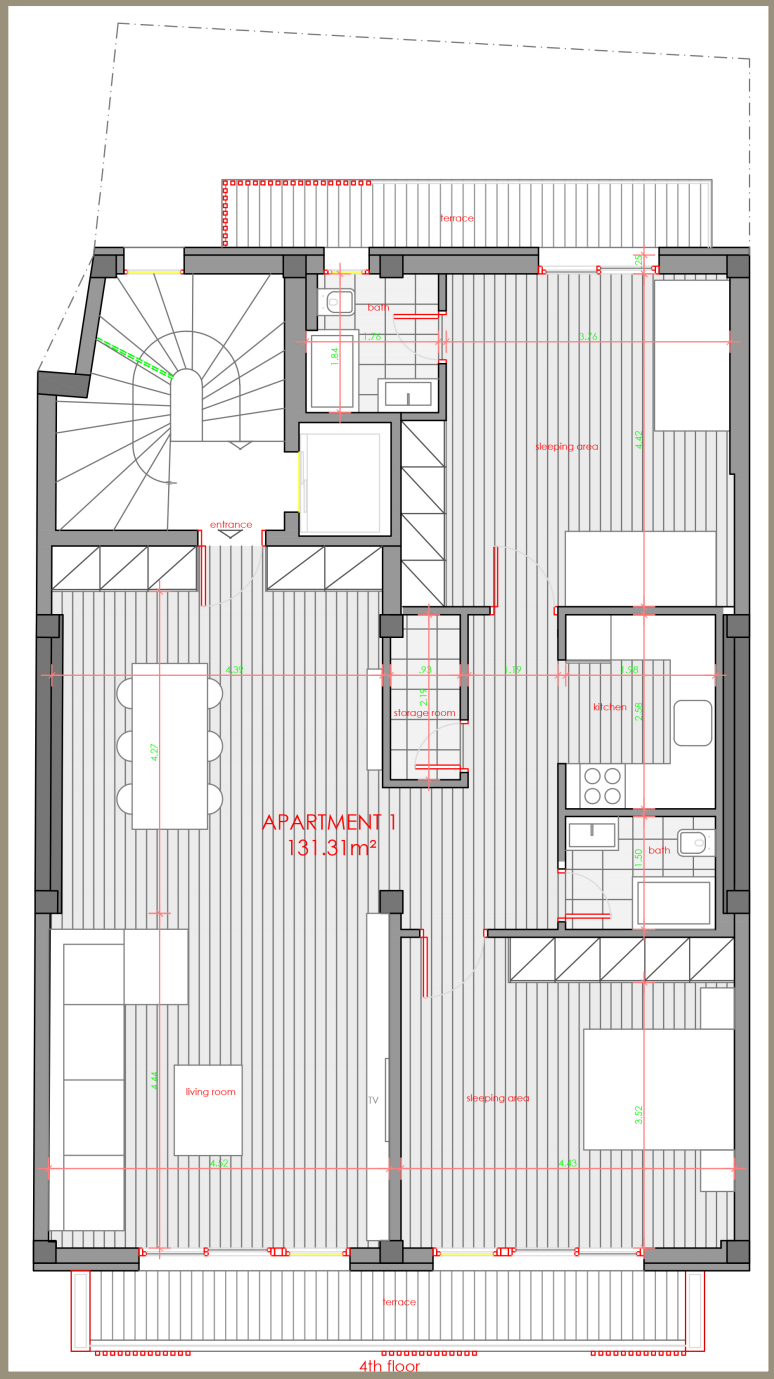
58.08 M2



APARTMENT TYPE 2

73.06 M2

# FLOOR NO. 4 AND 5



**APARTMENT  
TYPE 1**

**4<sup>th</sup> AND 5<sup>th</sup>  
FLOOR**

**131.31 M2**

**EXCELLENT INSULATION**

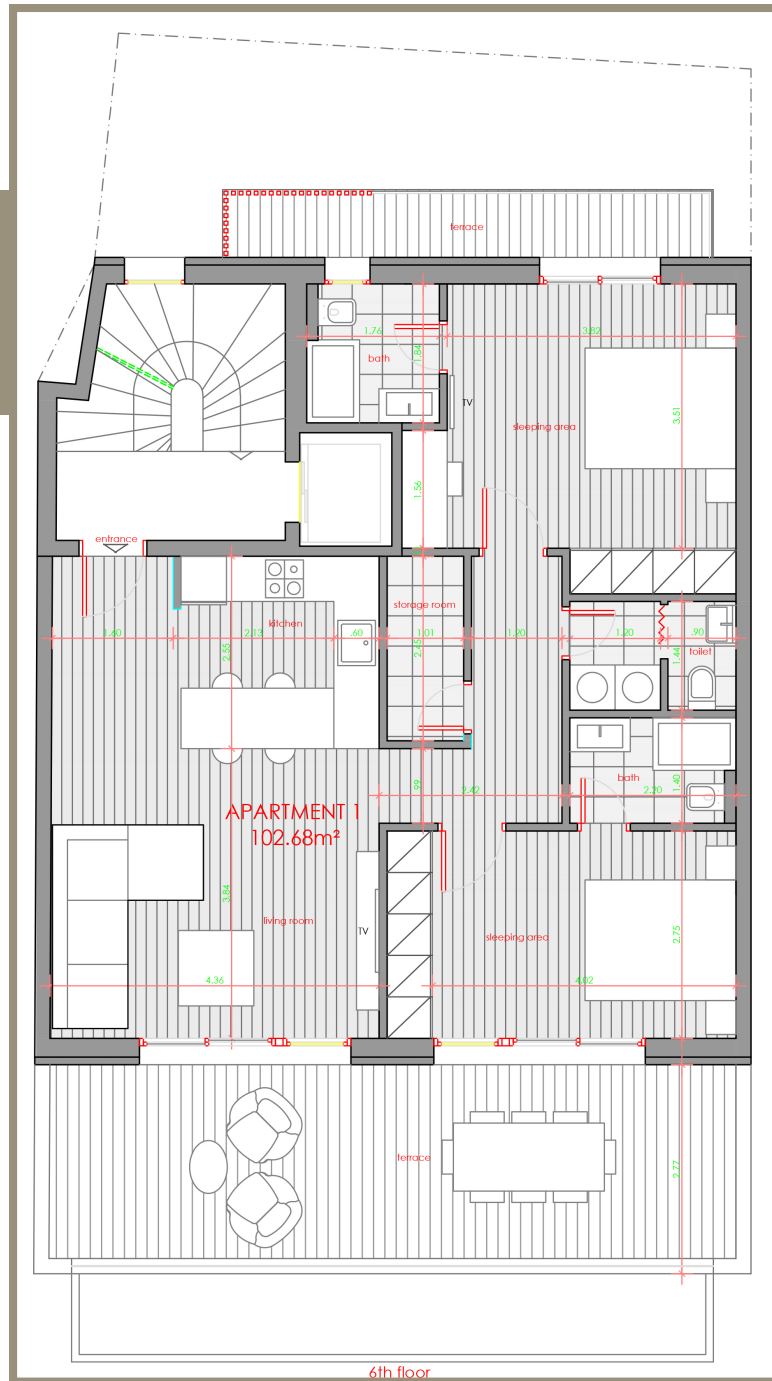


# FLOOR NO. 6

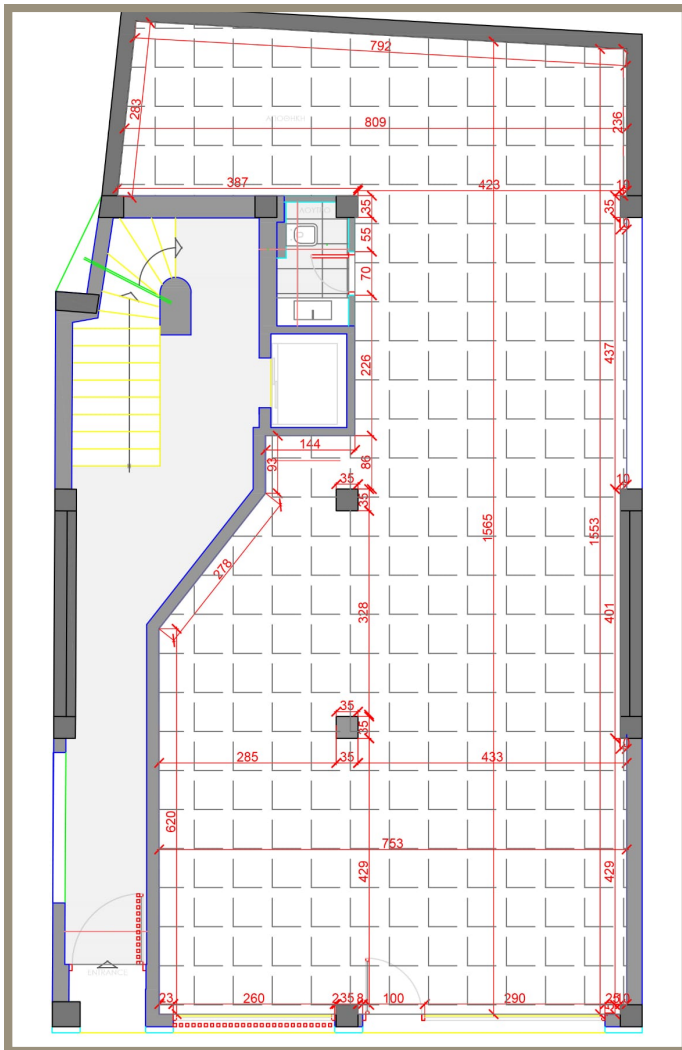
APARTMENT  
TYPE 1  
102.68 M2

ADVANCED STATICS

MODERNLY ARRANGED ENTRANCE

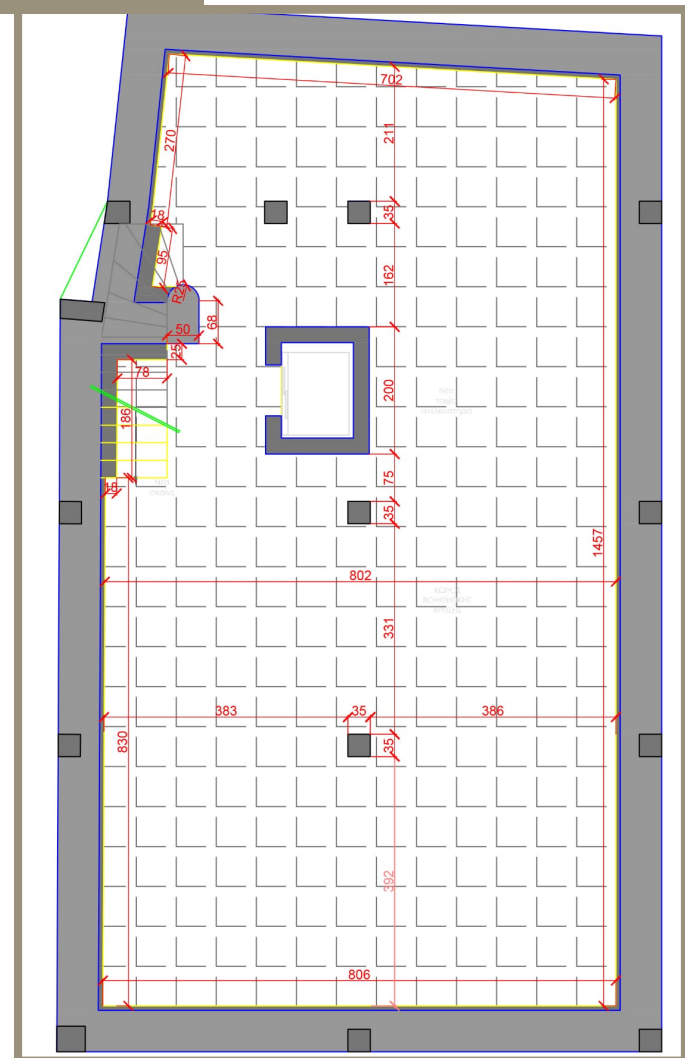


# ATTRACTIVE BUSINESS SPACE



155M<sup>2</sup> + 117M<sup>2</sup>

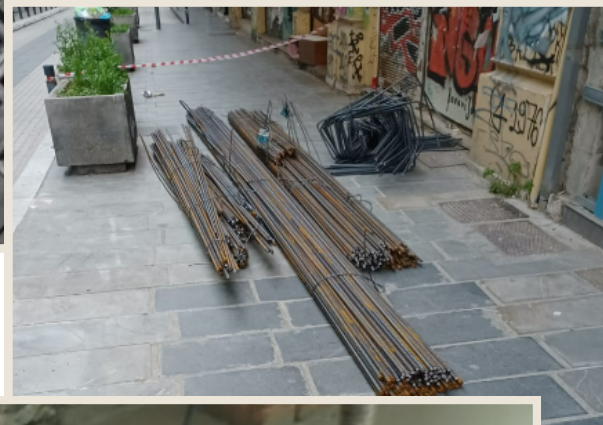
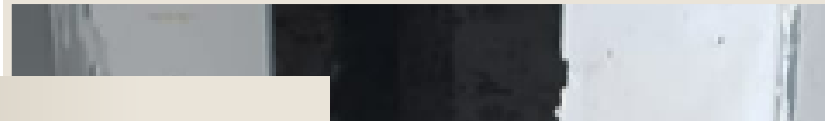
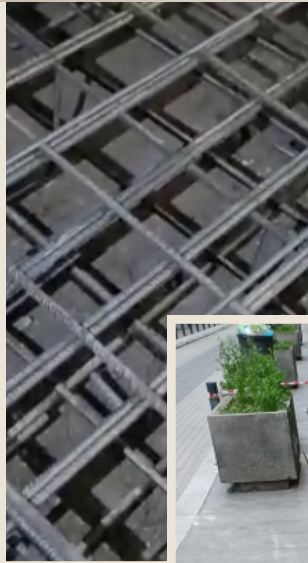
TOTAL: 272M<sup>2</sup>





# CONSTRUCTION PROCESS

ADVANCED STATICS  
CONTEMPORARY LANDSCAPED  
ENTRANCE



21

10  
APARTMENTS



IMMERSE  
INTO  
LUXURY &  
COMFORT



RECONSTRUCTION FROM THE  
GROUND UP

# TECHNICAL DESCRIPTION

**ADVANCED STATICS**

**CONTEMPORARY LANDSCAPED ENTRANCE**

**NEW ELEVATOR**

**EXCELLENT FLOOR AND WALL INSULATION**

**THERMAL FACADE SYSTEM 10 CM**

**TILES IN KITCHEN, BATHROOM**

**FULLY EQUIPPED BATHROOM**

**WOOD FLOOR OR TILES BY CHOICE**

**DECK SYSTEM OF BALCONIES**

**ARMORED EXTERIOR DOOR**

**CONTEMPORARY INTERIOR DOORS**

**WINDOWS, EXTERNAL ALUMINUM PROFILES – ALUMIL SMARTIA S67 & MD67 ADVANCED**

**TERRACE FENCING SYSTEM (FRONT OF BUILDING)**

**FROM ALUMINUM AND GLASS – ALUMIL**

**HEATING-COOLING DEPENDING ON THE SIZE OF THE APARTMENT A/C – SPLIT SYSTEMS +  
ALThERMA SPLIT 6 KW BUILT-IN TANK, COLLECTOR ISU 300 L+ FAN COILS DEVICE - LINE  
PER APARTMENT**

**INSTALLATION OF A TV-SAT ANTENNA**

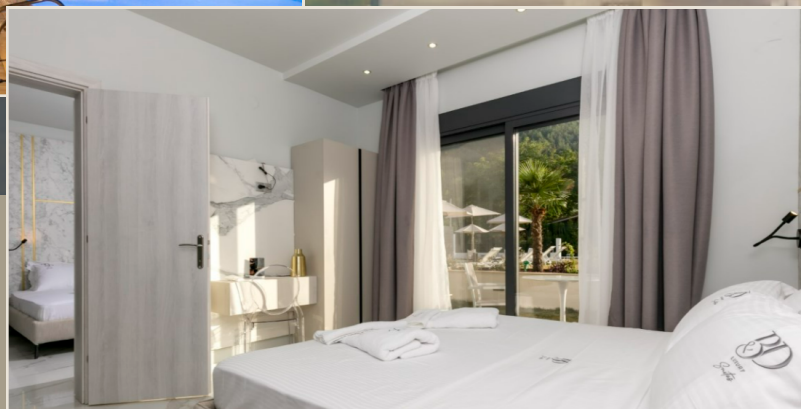
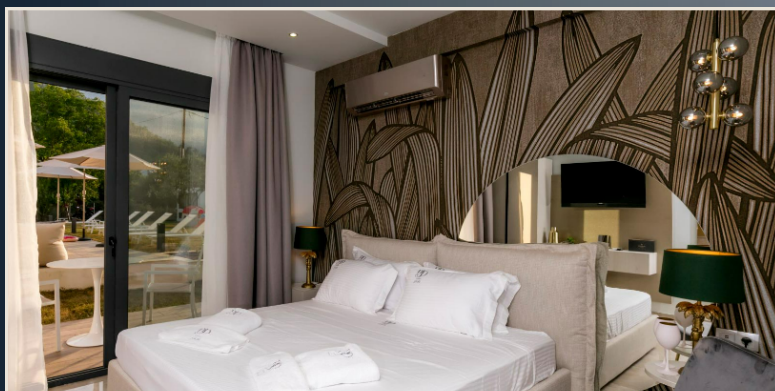
**VIDEO INTERCOM SYSTEM**



# PREVIOUS PROJECTS

# B&D

LUXURY  
*Suites*



## THASSOS GREECE

B&D LUXURY SUITES – BOUTIQUE COMPLEX WITH SWIMMING POOL  
– 12 ROOMS

ACCOMMODATION FOR 2, 4 AND 6 PEOPLE IN LUXURY APARTMENTS

FAMILY HOLIDAY IN SKALA POTAMIA

2 MINUTES WALK FROM THE MOST BEAUTIFUL BEACH GOLDEN BEACH



CLICK ON THE ICON

# KRIOPIGI VILLAS

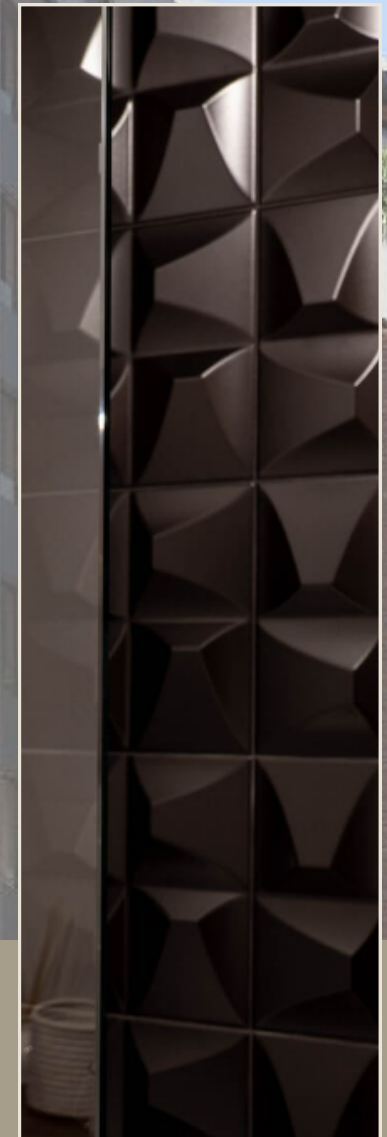
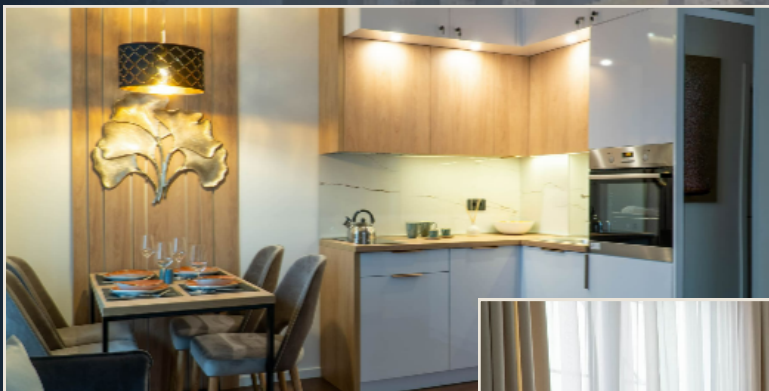
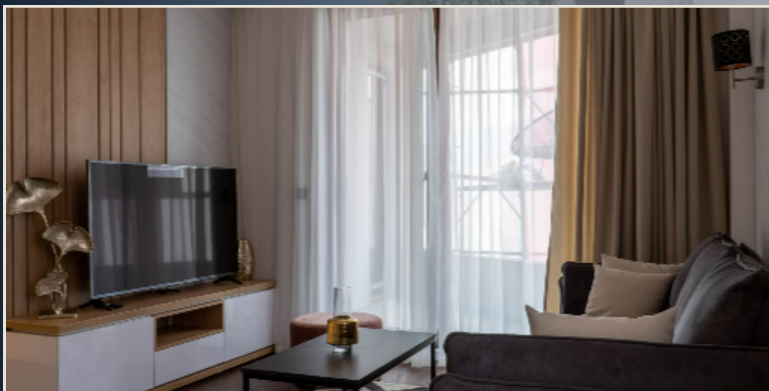


## KRIOPIGI VILLAS COMPLEX

FOR A PEACEFUL HOLIDAY IN PURE ECOLOGICAL NATURE WITH A PLEASANT SWIM IN THE AEGEAN SEA, A COMPLEX OF LUXURY VILLAS HAS BEEN BUILT 6 MINUTES ON FOOT ABOVE KRIOPIGI BEACH, IN THE MIDDLE OF KASSANDRA, THE FIRST LEG OF HALKIDIKI, A PLACE THAT LIVES ALL YEAR ROUND AND IS RICH IN PINE FORESTS AND OLIVE GROVES.

# ZLATIBOR 21<sup>st</sup> CENTURY

21<sup>st</sup>  
zlatibor century  
— residence, spa & wellness —



ZLATIBOR  
SERBIA

IN THE HEART OF THE POPULAR ZLATIBOR, SERBIA, IN 2023 THE BEAUTIFUL HOTEL-RESIDENTIAL BUILDING 21ST CENTURY ZLATIBOR BY ADORA WILL BE OPENED. LOCATED IN A PINE FOREST WITH THE MOST BEAUTIFUL PANORAMIC VIEW. A CONTEMPORARY CONCEPT OF VARIOUS SOPHISTICATED CONTENTS AND A MODEL FOR A QUICK RETURN TO THE OWNERS' INVESTED MONEY, BY RENTING THE APARTMENTS WHEN THEY WILL NOT USE THEM FOR MOUNTAIN ENJOYMENT, RECREATION AND REST.

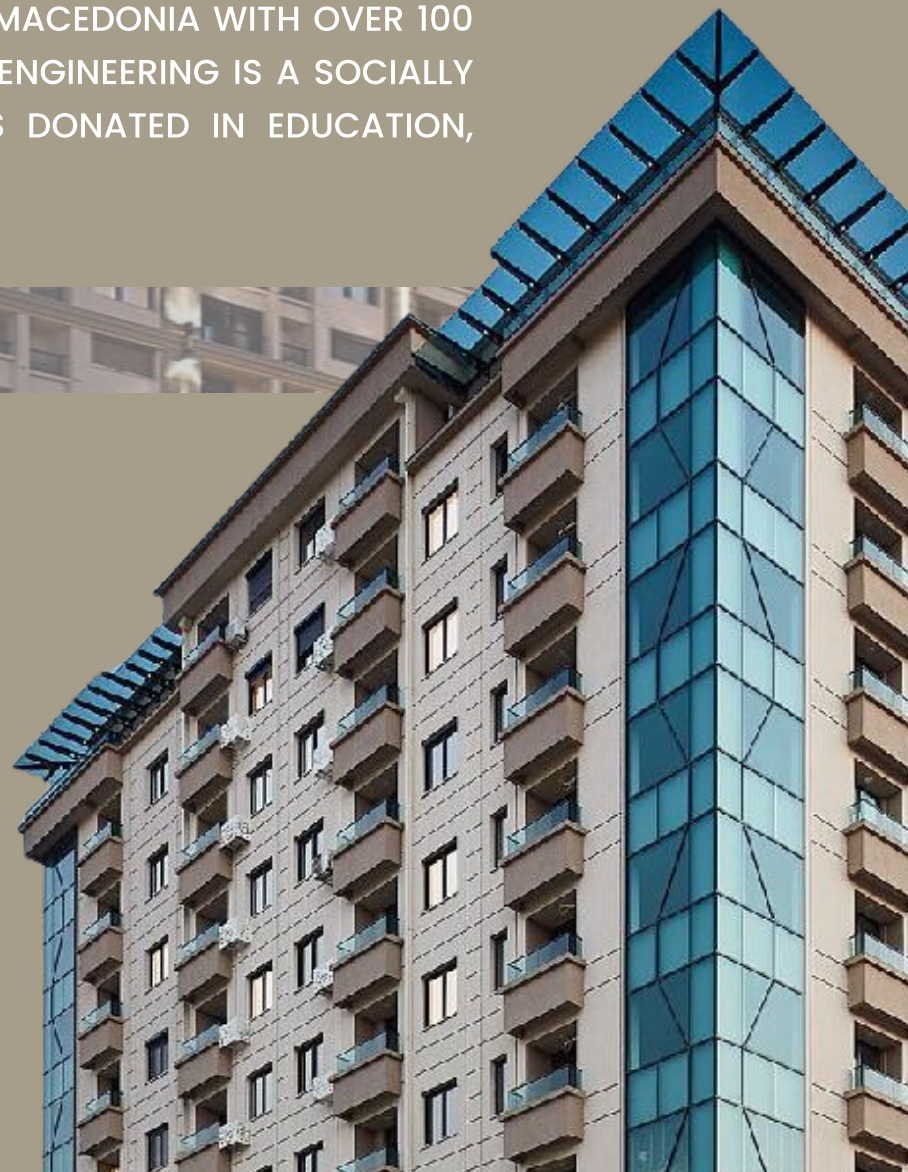
# ADORA ENGINEERING



## ONLY DEEDS ARE REALITY

ADORA IS AMONG THE MOST AWARDED COMPANIES IN MACEDONIA WITH OVER 100 INTERNATIONAL AND NATIONAL RECOGNITIONS. ADORA ENGINEERING IS A SOCIALLY RESPONSIBLE COMPANY WITH OVER 5 MILLION EUROS DONATED IN EDUCATION, SCIENCE, HEALTH, CULTURE, SPORTS.

AMONG THE MOST RECOGNIZABLE BRAND BUILDINGS IN MACEDONIA ARE THE ADORA FLATIRON COMPLEX, THE ADORA DIAMOND GARDEN – THE LARGEST COVERED GREENHOUSE FOR GREEN HOUSING IN SOUTHEAST EUROPE, THE 20 MODERN BUILDINGS AND BUSINESS FACILITIES IN THE "AERODROM" MUNICIPALITY, AND THE FIRST ENERGY-EFFICIENT HOMES IN OHRID AND STRUMICA. AT THE MOMENT, ADORA IS INVESTING SEVERAL MILLION EUROS IN THE CONSTRUCTION OF ONE OF THE MOST MODERN HOMES IN THE BALKANS.



# CONTACT

---

[INFO@21THESSALONIKI.COM](mailto:INFO@21THESSALONIKI.COM)

---

SALES PARTNER

ADORA BUSINESS GROUP

NATASHA POPOVA

078 240 354

[PRODAZBA@ADORA.COM.MK](mailto:PRODAZBA@ADORA.COM.MK)

KATERINA KORSHUL

072 204 024

[PRODAZBA@ADORA.COM.MK](mailto:PRODAZBA@ADORA.COM.MK)

SONJA MADZOVSKA

078 240 229

[PRODAZBA@ADORA.COM.MK](mailto:PRODAZBA@ADORA.COM.MK)

[WWW.THESSALONIKI21.COM](http://WWW.THESSALONIKI21.COM)

CLICK TO VISIT OUR WEBSITE





**THE MOST  
ATTRACTIVE  
LOCATION  
IN THE CITY  
CENTRE**



The image features a modern architectural rendering of a multi-story building. The building is shown in a cutaway view, revealing its internal structure and multiple floors with balconies. The balconies are enclosed with glass railings and have wooden slat ceilings. The building's exterior is a mix of white and dark blue panels. The background is a dark blue gradient with a white geometric shape on the left. The text 'THESSALONIKI 21' is overlaid in a large, white, sans-serif font across the middle of the image. Below the title, there is a white rectangular box containing the email address 'INFO@21THESSALONIKI.COM'.

# THESSALONIKI 21

[INFO@21THESSALONIKI.COM](mailto:INFO@21THESSALONIKI.COM)